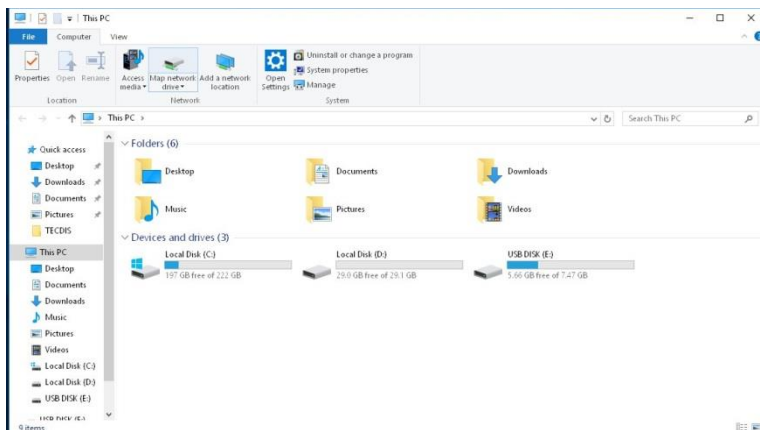


TECDIS,(CoastalE) Navtor Navbox og Windows 10

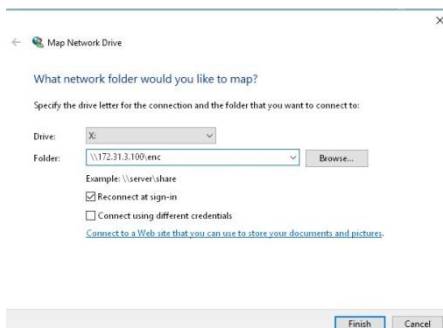
Ref. Navtor manual page 3:

NAVTOR AVCS ENC using NAVBOX With TELKO TECDIS

1. Insert a USB service key into your TECDIS system and the TECDIS will go into Service Mode
2. Exit the TECDIS software to make the Windows desktop available
3. Open **(My Computer/This PC)** and select **(Map Network Drive)** from the menu



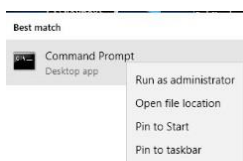
4. Enter the details shown below and click **(Finish)**



5. Click on the start/Windows button



6. Type: **cmd**, Right click on **(Command Prompt)** and select **(Run as administrator)**



7. Type: `cd/`

```
Command Prompt
Microsoft Windows [Version 10.0.14393]
(c) 2016 Microsoft Corporation. All rights reserved.

C:\Users\COASTAL>cd/

C:\>
```

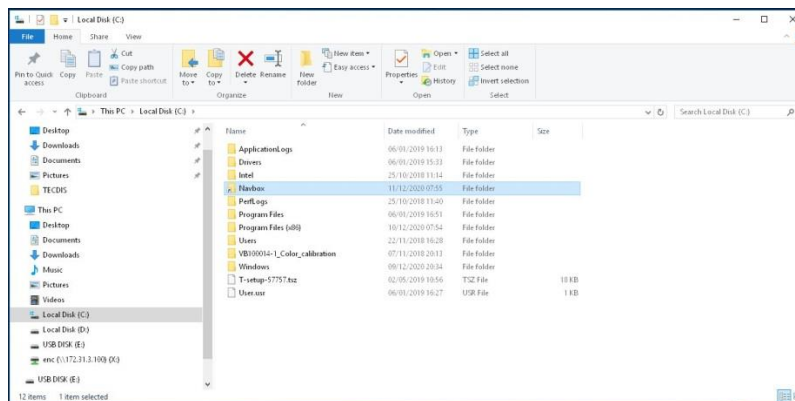
8. Type: `mklink /D C:\Navbox \\172.31.3.100\enc`

```
Administrator: Command Prompt

C:\>mklink /D C:\Navbox \\172.31.3.100\enc
symbolic link created for C:\Navbox <====> \\172.31.3.100\enc
```

Symbolic link created for C:\Navbox <====> \\172.31.3.100\enc

9. Open the C: drive from (My Computer/This PC) and verify that there is a folder “Navbox”



And “AVCS” or “NAVATOR” folder inside. If the Navbox folder is empty, you should insert the NavStick in the NavBox in order to synchronize the ENC charts to this location. The NavStick can then be left permanently in the NavBox.

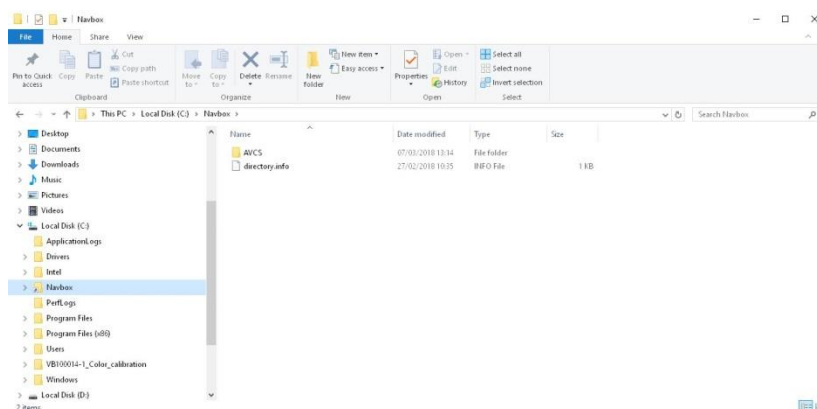
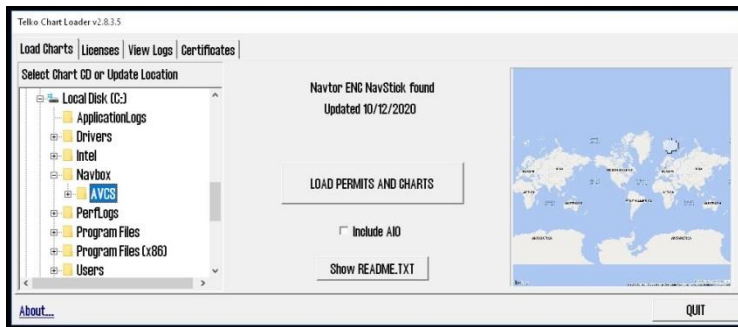
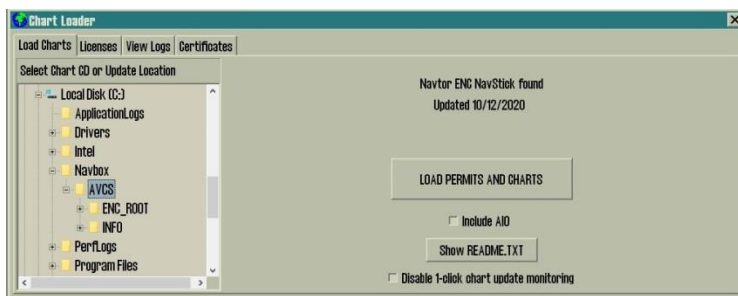


Chart Loader:



Instead of “AVCS” folder, you may see the “NAVTOR” folder.

Chart Loader in TECDIS:



Instead of “AVCS” folder, you may see the “NAVTOR” folder.